



MARY-24

MULTIFUNCTIONAL LOW-FREQUENCY EM RECEIVER



HIGHLY PORTABLE

REAL-TIME DATA ACQUISITION

MULTIFUNCTIONAL

USER FRIENDLY

MARY-24 (Multifunctional Low-frequency EM Receiver) is one of the newest and leading technological innovations in portable geophysical equipment. It is compact, easy to use and it allows end-users to quickly perform structural, mapping, explorative, hydro-geological, engineering, archaeological, geotechnical and ecological measurements.

APPLICATION: MARY-24 Receiver could be used for the following:

- Apparent resistivity measurements (amplitude of the signal's first harmonic is measured);
- Induced polarization measurements (phase shifts between carrier-harmonics are measured);
- Self potential measurements (constant component of the field is measured);
- Industrial frequency and cathode protecting field measurements for the purpose of mapping and studying the underground utility conditions.

ADDITIONAL FEATURES: MARY-24 has a large LCD display and ergonomic keyboard. Power is supplied with internal rechargeable batteries or external power. During the process of measurement MARY-24 registers the input signal, processes it, outputs results on the screen and stores the data. Acquired data could be transferred to PC for further in-lab data processing.

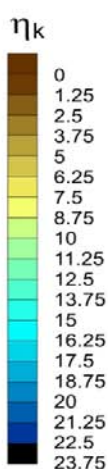
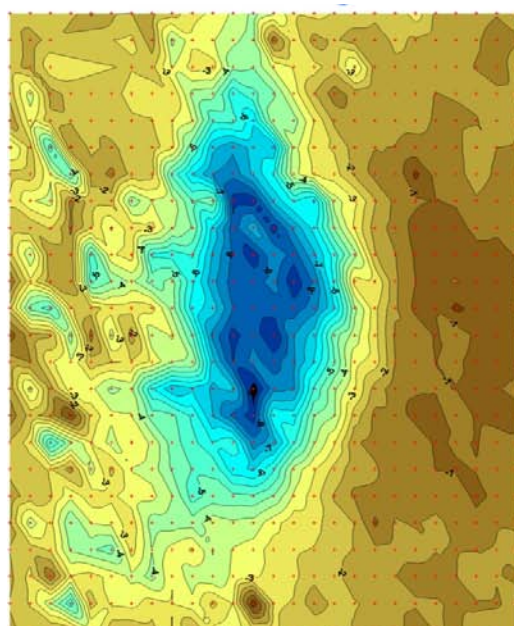


SPECIFICATION:

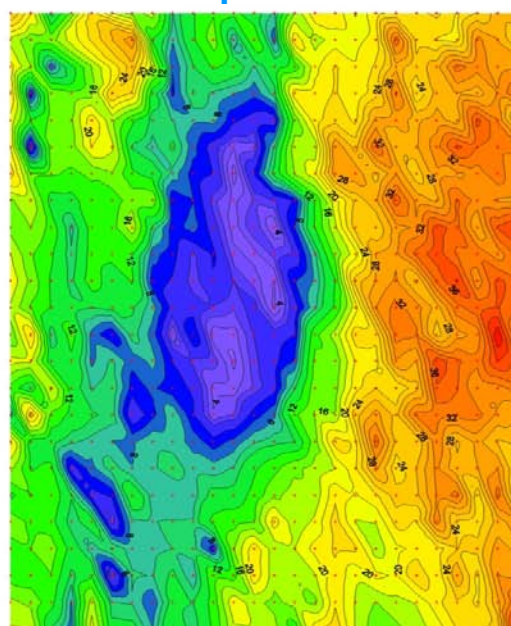
Geophysical methods:	SP, Resistivity, IP, FS
Channels:	1
ADC	24 bit
Frequency list:	0.019, 0.038, 0.076, 0.153, 0.305, 0.610, 1.221, 2.441, 4.883, 9.766, 19.53, 39.06, 78.13, 156.3, 312.5, 625.0 Hz 0.021, 0.032, 0.042, 0.063, 0.083, 0.125, 0.167, 0.250, 0.333, 0.500, 0.667, 1.000, 1.333, 2.000, 2.667, 4.000, 5.333, 8.000, 10.67, 16.00, 21.33, 32.00, 42.67, 64.00, 85.33, 128.0, 170.7, 256.0, 341.3, 512.0 Hz Additional: 50, 60, 100, 120 Hz
Input Range:	-2.0...+2.0 V
Minimal measurable signal:	1 mV
Input Impedance:	>5 MOhm
Compensable voltage range:	-1.25...+1.25
Compensation imprecision:	10 mV
Amplification:	¼, ½, 1, 2, 4, 8, 16, 32, 64, 128, 256
Internal memory size:	16Mb
Interface type:	USB 1.1
Max. power consumption:	2 W
Internal power supply:	12 V, 3 Ah
External power supply:	12 V
Min. autonomous duty time:	10 hours
Temperature range:	-20 - +60 °C
Weight:	< 3 kg
Dimensions:	190 x 145 x 72 (95)

MARY-24 RECEIVER FIELD APPLICATION DURING CHAMBER EXPLORATION ON KOLA PENINSULA

Polarization



Impedance



0 m 10 m 20 m 30 m 40 m

ADVANCED GEOPHYSICAL OPERATIONS AND SERVICES INC.

162 Oakdale Rd., North York, Ontario, M3N 2S5, Canada

Tel: 1(416)747-8800 Fax: 1(416)747-5761 info@agcos.ca www.agcos.ca