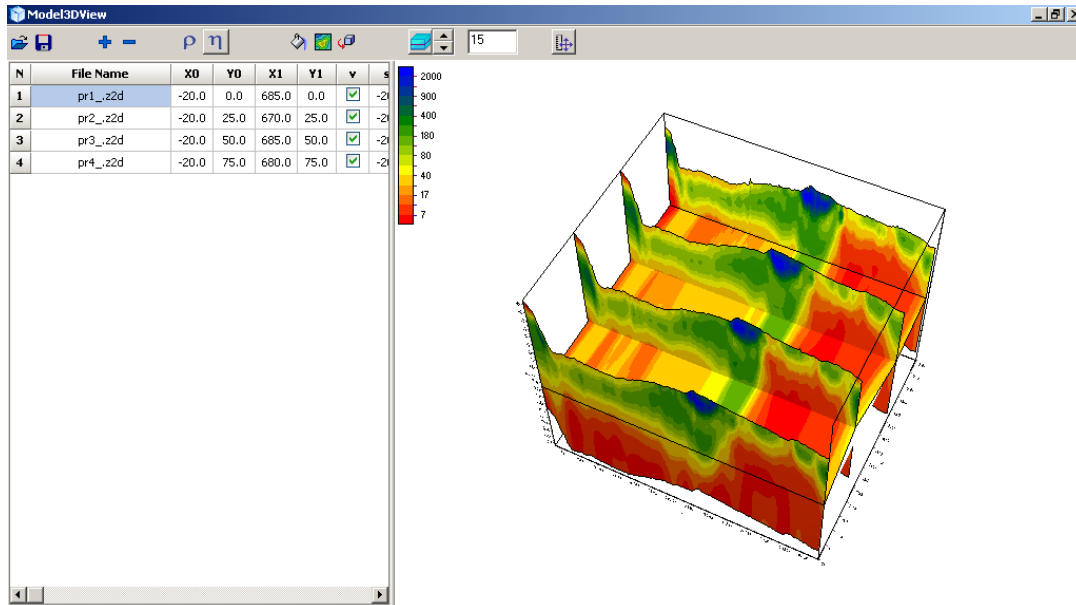




## 3DModView

### Software for 3-D visualization of 2-D inversion results



The Z3DModelView program is designed for three-dimensional visualization of the results of relevant one or two-dimensional interpretation of the data obtained in the Zond inversion software. For geophysical surveys, measurements are usually performed by a system of parallel profiles. To better understand the structure of the survey area, it is convenient to construct such data in three dimensions. Such approach allows to effectively meet the challenges of correlation structures for parallel profiles, compare profiles to perpendicular profiles at the intersections, build horizontal sections for a given depth (several depth slices).

The advantages of Z3DModelView are:

- Correct the constructed model with additional data appearance;
- To use unregulated profile system;
- To present topography;
- Simple user friendly interface;
- Possibility to create contour lines view as well as interpolation maps;
- Possibility to export some results as text files.

Schema profiles can be stored in a graphical format. The program also allows to export the schema profiles or horizontal slice to a text file.

Simple, easy to use interface and extensive graphical reporting capabilities allow the most efficient way of solving geological problems.