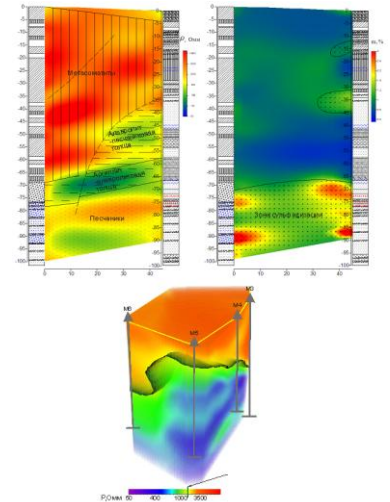
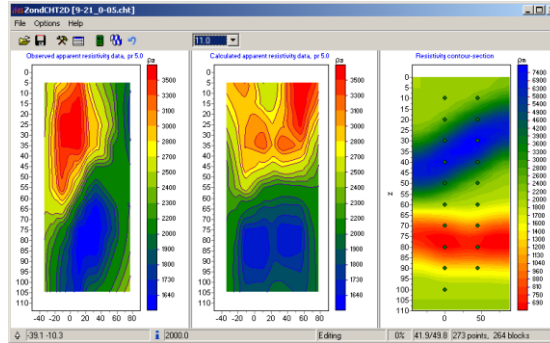
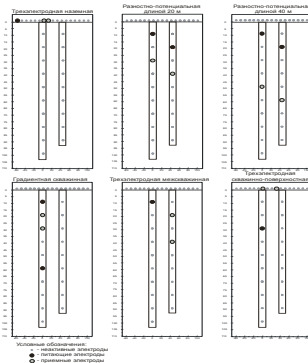




# ZondCHT

## Resistivity, IP and EM logging 2D Data Interpretation (specialized for borehole measurements)



ZondCHT is designed for 2D inversion of cross borehole electromotography, Resistivity and IP electric logging.

The main features of the program are:

- Support of any quantity of the boreholes;
- Construction of the net according to the borehole's geometry;
- Different variants of data view;
- Special algorithm to construct pseudo-sections;
- Special algorithm of inversion reducing influence near borehole space;
- Special robust schemes for noise estimation.